



## About CRC

Every day more than 800 companies rely on CRC Data Protection to safeguard their critical business data. With more than two decades of experience in information management and security, we are experts in mission-critical data operations. Located in Alpharetta, Georgia, our 32,000 sq. ft. headquarters features high-tech training facilities, the latest security advances and many other features to help us better serve our CRC clients and strategic partners.

CRC partners with leading companies like Dell, Verizon and Microsoft to ensure robust data protection. Our data is synchronized between two fully-redundant secured data centers in real time via Cisco® Secure Virtual Private Network, with regular NetSec® assessments, redundant PIX® firewalls, and intrusion detection systems for comprehensive security. The CRC client interface features SSL encryption and we offer up to 256-bit AES encryption for data transfer and storage.

### CRC DataProtection Solutions:

CRC DataProtection [Enterprise Data Backup & Recovery](#)

CRC DataProtection [Backup Lifecycle Management \(BLM\)](#)



Copyright © 2000-2006 Computer Resource Center, LLC  
All Rights Reserved

Respective trademarks the property of their owners

### CRC, LLC

6240 Shiloh Road  
Alpharetta, GA 30005  
Ph. 800-650-2679  
F. 800-852-3585



# Laptop Backup & Recovery

## The Data Protection Solution for Mobile Computing

- Unlimited-seat licensing model ensures that companies pay only for the aggregate amount of compressed data from across all laptops – whether ten laptops or several thousand
- Automated backups decrease administrative overhead and ensures that end users aren't relied upon to safeguard their own data
- Fast and efficient data recovery enables critical data to be restored quickly from the online vault in the enterprise data center
- Scalable architecture supports tens of thousands of laptops across virtually any type of IP network
- Bandwidth and CPU throttling features allow end users to control the resources used by the backup application – so they can work on their laptops while a backup/restore job takes place
- Advanced security and authentication algorithms, including AES encryption, ensure the safety, confidentiality, and compliance of the data at all times
- Integrated storage billing system enables IT staff to charge company departments – or even individual laptop users – for their storage consumption

In most organizations, data from mobile users does not reside in the company's central data center – making it difficult for IT administrators to properly back up and safeguard this data. In many cases, information stored on laptops is critical to a company's business operations, but it is often left up to end users to protect and safeguard this data. Unfortunately, industry research has shown that users cannot be relied upon to back up their data in a thorough and consistent manner. This leaves companies exposed to considerable risk from irreparable data loss or lengthy recoveries.

Adding to these challenges is the fact that backup applications for laptop users often require continuous maintenance and support – such as administering backup jobs and restoring lost files. This places a large burden on taxed IT departments.

### A Solution Geared for Laptop Users

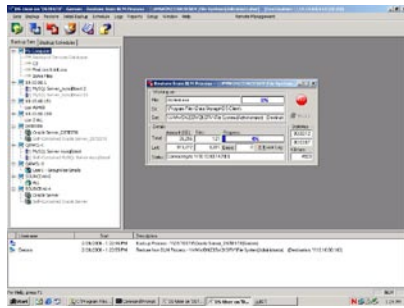
CRC DataProtection has the answer to these challenges. With this solution in place, all of a company's laptop data is copied over your IP WAN to a central online repository. If users lose data, your help desk – or the users themselves – can restore it immediately and since all your remote data is stored in a central location under IT control, it's easy to administer, even if you use a central help desk. It also requires less IT overhead.

Client installations are fully automated across a variety of platforms. It's easy to implement customized, pre-defined, or "ghosted" backups for each user, ensuring consistency across your organization. Our laptop backup solution securely backs up all data over any IP-based network connection – even dial up. The familiar Windows Explorer-like backup interface makes it easy for users to restore lost data themselves. Encryption, ensure the safety and confidentiality of your data at all times.



### Single, Centralized Control

The CRC DS-System software, installed at the central data center, makes it easy for IT staff to manage the online vault and data repository, track backup consumption for each user, and perform other high-level administrative tasks. Using the CRC Client Lite module, which also resides on each laptop and is distributed free of charge, help desk staff can connect to laptops over the network to schedule backups jobs and restore lost files. When used in tandem, these two applications provide the IT team with a complete range of powerful administrative features- giving them a single point of control over all backup/restore support requirements.



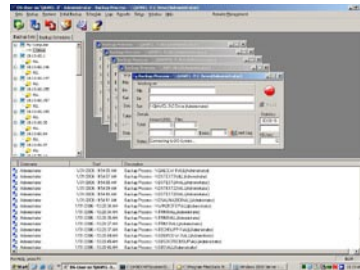
### Free, Unlimited Client Installations

Unlike other leading solutions, CRC's unlimited-seat licensing model means that you pay only for the aggregate amount of compressed data from across all laptops—regardless of whether you have one laptop or several thousand. This cost effective licensing model keeps deployment costs low, even for large organizations.

Because duplicate data that appears on multiple laptops – such as system files and registry settings – is sent only once to the online vault, the average storage requirements per laptop will often decrease as more laptops are added to the network. Since you pay only for the total amount of data protected, the cost-per-laptop is reduced as your organization grows.

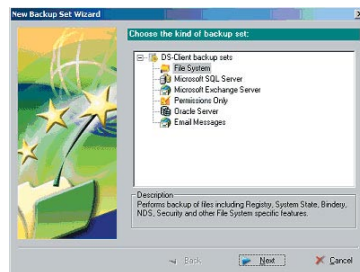
### Easy Deployment Across the Enterprise

CRC DataProtection automates and simplifies as much of the backup process as possible. Client installations can be fully automated across a variety of operating systems and network configurations, making deployment easy. Users who choose to install the software on their own are presented with a simple wizard to ensure that critical data – such as the Windows registry – is always backed up.



### Fast and Efficient Data Recovery

End users can restore data themselves through an easy and intuitive interface. This reduces the number of calls to the IT help desk from users who need to recover lost files. In the event of a complete loss of data, the help desk can send the user a CD/DVD-ROM with all data and user settings for a complete bare metal recovery.



### Easy Maintenance and Administration

A flexible scheduling interface enables IT staff to configure backup jobs for laptop users in remote locations— even in different time zones – according to their individual needs. With CRC's automatic upgrade feature, the backup software can be upgraded without user intervention – ensuring that the latest version of the software is continually available to all users across the organization.

### Optimized for Peak Performance

After the initial backup of data takes place, the DS-Client Lite application performs incremental backups, sending only compressed changed data to the online vault. Duplicate files are backed up only once— even if located on different laptops—

sophisticated compression algorithms adapt to the types of files on users' laptops – ensuring optimum transmission speeds while minimizing processing overhead. Network resources are continuously monitored during backup and restore operations to prevent data bottlenecks. End users can control how many resources are used by the backup application, so they can check email, browse, and do other work during a backup job.

### Hardware Requirements

The CRC DataProtection System application installed at the central hub runs on Linux for ultra-stability. Storage architecture can be DAS, SAN or NAS.

## CRC DataProtection for Enterprise Laptops

